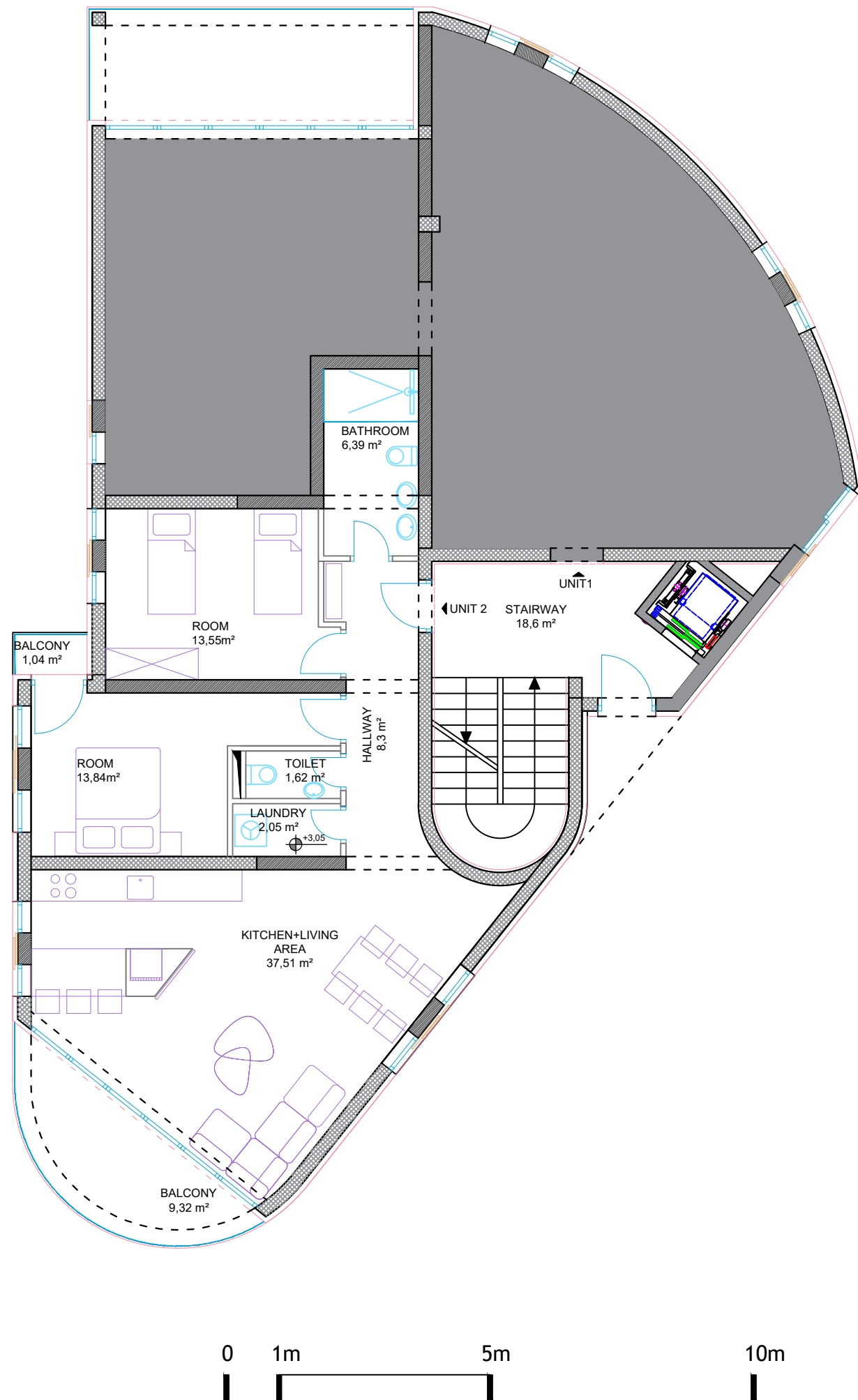


UNIT 2

UNIT LAYOUT 1:100



The apartment in the southern part of the building consists of a connected kitchen, dining and living area with access to the terrace, hallway with access to the bathroom, laundry room, toilet, and 2 bedrooms. The apartment has an unobstructed sea view from the living room. The apartment has a direct access to a courtyard with a swimmingpool. The apartment has a parking space in the yard.

INVESTITOR:
 Porta Sukošan d.o.o.
 Augusta Šenoje 13b, Zadar
 OIB:86565443274

STAMBENA ZGRADA
 k.č. 7149/9, k.o. SUKOŠAN



SUPERPOSITION d.o.o.
 Sv.Spasa 26 :: 21000 Split :: HRVATSKA

Tel: +38521207731
 Mob: +38598363944

info@superposition.hr
 ivica@superposition.hr

GROUND FLOOR			
UNIT 2	AREA	FACTOR	USEFUL AREA
kitchen - living area	37,51	1	37,51
hallway	8,3	1	8,3
room	13,55	1	13,55
room	13,84	1	13,84
bathroom	6,39	1	6,39
toilet	1,62	1	1,62
laundry	2,05	1	2,05
balcony	9,32	0,5	4,66
balcony	1,04	0,5	0,52
TOTAL			88,44
backyard	128,28	0,1	12,83
pool	29,98	0,5	14,99
pool engine room	4,5	0,5	2,25
parking spot	13,75	0,2	2,75
TOTAL			121,26