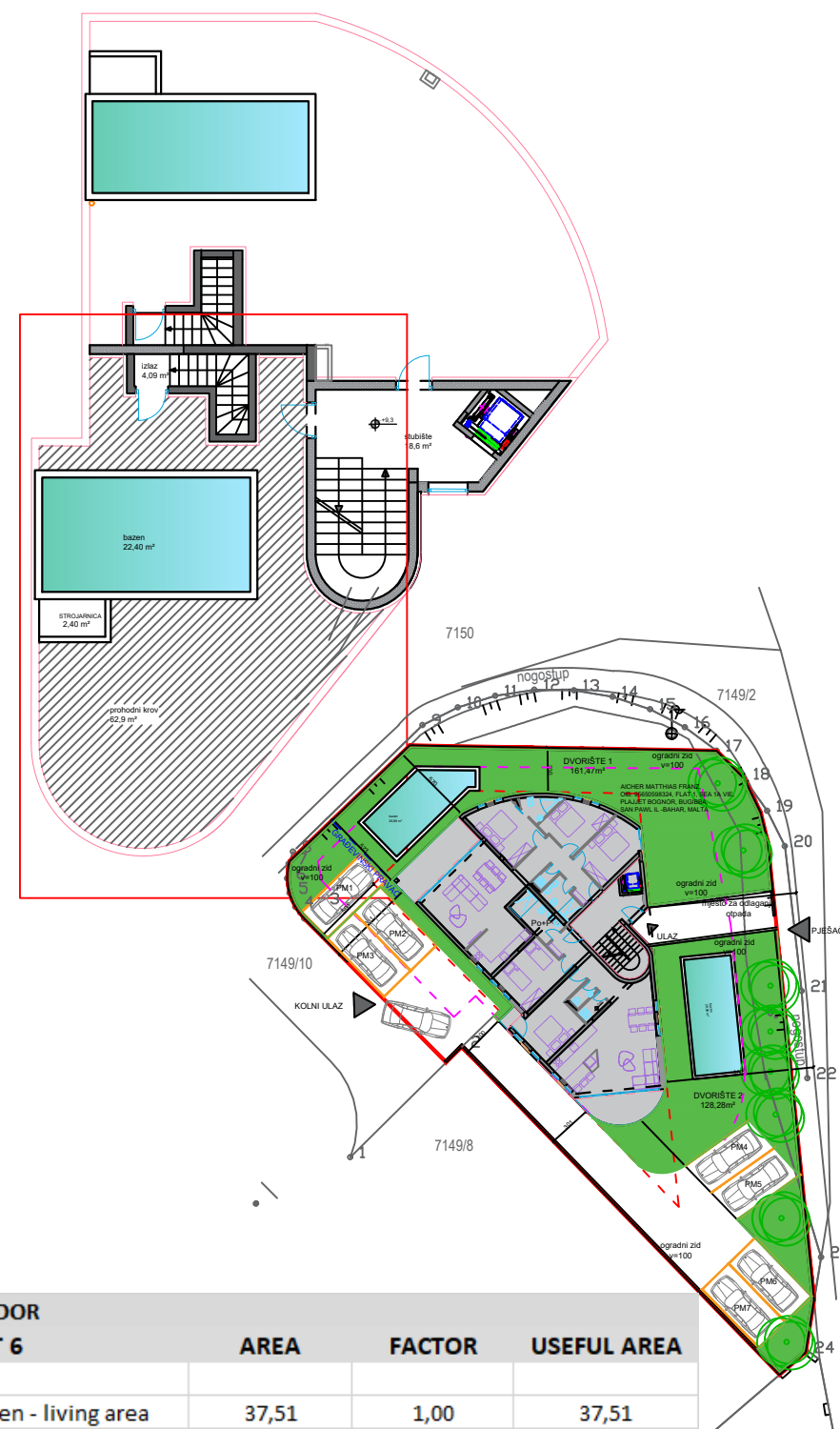
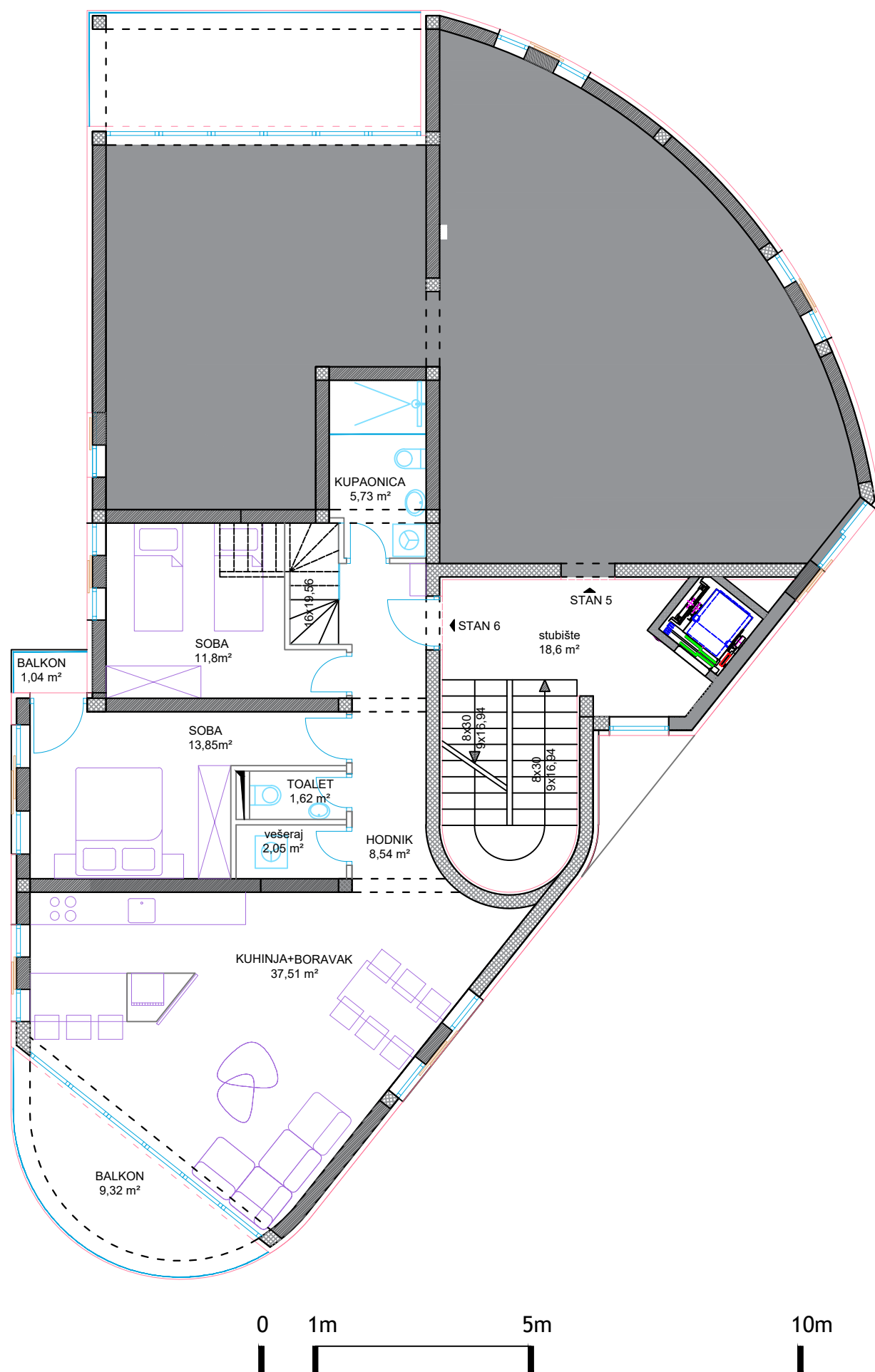


UNIT 6

UNIT LAYOUT 1:100



2. FLOOR UNIT 6	AREA	FACTOR	USEFUL AREA
kitchen - living area	37,51	1,00	37,51
hallway	8,54	1,00	8,54
room	11,80	1,00	11,80
room	13,85	1,00	13,85
balcony	9,71	0,50	4,86
bathroom	5,73	1,00	5,73
toilet	1,62	1,00	1,62
laundry	2,05	1,00	2,05
balcony	1,04	0,50	0,52
roof exit	4,09	1,00	4,09
TOTAL			90,57
roof terrace	62,90	0,25	15,73
pool	22,40	0,50	11,20
engine room	2,40	0,25	0,60
parking spot	13,75	0,20	2,75
TOTAL			120,84

The apartment in the southern part of the building consists of a connected kitchen, dining and living area with access to the terrace, hallway with access to the bathroom, laundry room, toilet, and 2 bedrooms. The apartment has an unobstructed sea view from the living room. Also, the apartment has a roof terrace which is directly accessible via a staircase to the roof. The apartment has a parking space in the yard.

INVESTITOR:
Porta Sukošan d.o.o.
Augusta Šenoje 13b, Zadar
OIB:86565443274

STAMBENA ZGRADA
k.č. 7149/9, k.o. SUKOŠAN



SUPERPOSITION d.o.o.
Sv.Spasa 26 :: 21000 Split :: HRVATSKA

Tel: +38521207731
Mob: +38598363944

info@superposition.hr
ivica@superposition.hr